

FORT WAYNE COMMUNITY SCHOOLS



WE ARE YOUR SCHOOLS

DR. MARK DANIEL
SUPERINTENDENT

COVID-19 UPDATE
Board of School Trustees
September 13, 2021



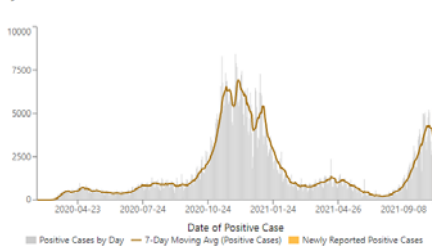
WE ARE YOUR SCHOOLS

COVID-19 In Our Community

COVID-19 cases in Allen County and in our schools remains high. Allen county remains ORANGE on the state's advisory map. Cases continue to rise, but our positivity has leveled off to just under 12%.

Positive Cases

Statewide Positive Cases by Day



Advisory Level

Advisory level refers to the current guidelines the county must follow. A county must remain at a lower Weekly Two-Metric Score for two consecutive weeks to move down to a lower advisory level.

Weekly 2-Metric Score

- Blue (0 and .5)
- Yellow (1 and 1.5)
- Orange (2 and 2.5)
- Red (3)

Weekly Cases Per 100,000 Residents

- Less Than 10 new cases(0)
- 10 to 99 new cases(1)
- 100 to 199 new cases(2)
- 200 or more(3)

7-Day All Tests Positivity Rate

- Less than 5% (0)
- 5% to 9.9% (1)
- 10% to 14.9% (2)
- 15% or greater (3)

The ▲ indicates a disclaimer alert for the county. Hover over the symbol for additional details.





COVID-19 Cases Among Students Is Rising

- 80% of our cases are students.
- 92% of our cases are unvaccinated.
- A high case count along with the number of students that need to be quarantined has created a significant workload for schools and school nurses, especially in secondary schools where students attend multiple classrooms per day.
- Many cases are a result of exposure to infected family members and to other community activities where interactions are close.
- There is some school spread, but we are most vulnerable where contact is close and masking is difficult: lunch, some special education classrooms and cocurricular activities.



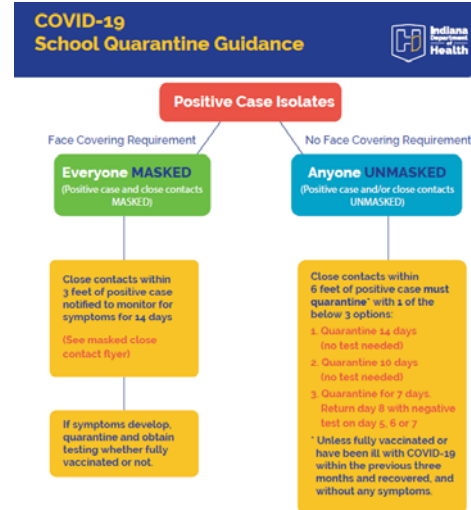
COVID-19 at FWCS

Cumulative Fully Vaccinated Secondary Students As Of XXX				Cases at FWCS				
Grade	Fully Vaccinated	Enrollment	Percentage		Students	Staff	Total	
High School				Week 1	August 15 - 21	57	30	87
12	701	1,875	37%	Week 2	August 22 - 28	113	22	135
11	756	2,103	36%	Week 3	August 29 - September 4	148	27	175
10	617	2,125	29%	Week 4	September 5 - 13	114	26	140
9	627	2,175	29%		Total Cases Since Start of School:	432	105	537
Total HS	2,701	8,278	33%		80%	20%		
Middle School				<i>Cumulative Students Quarantined: 3,600+</i>				
8	569	2,225	26%	<i>Highest monthly case count 2020-21 (November): 380</i>				
7	475	2,104	23%	Total Cases 2020-21: 1,499				
6	40	2,082	1%					
Total MS	1084	6,411	17%					
Total Secondary	3,785	14,689	26%					



Changes in Quarantine and COVID Management

- We no longer need to quarantine close contacts if masks are worn.
- This has significantly dropped the number of students that need to quarantine.
- Administrators have taken over contact tracing once they receive case information from the nurse.
- Technology has assisted by developing applications to manage case reports and contact parents.



It Remains Extremely Important To Adhere To Our Prevention Strategies

- Assume if community spread is high the same will be true for schools.
 - Self-Monitor every day before coming to work or school.
- Stay home if you are sick.
 - Parents reporting COVID-like symptoms for their child will get an automated message reminding them of the rules for a safe return.
- Follow all isolation and quarantine rules.
- Mask as much as possible while indoors.
- Social distance at least 6 feet, as much as possible when masks are off.
- Frequent handwashing and/or sanitizer use.
- Good cleaning routine of frequently touched/shared surfaces.



Vaccination

- While we have always respected the right of families to choose vaccination, public health experts have stated vaccination is the way out of the pandemic.
- Vaccination has prevented many students and staff from quarantine.
- Student vaccination rates continue to rise slowly among those eligible.
 - Approximately 33% high school students vaccinated
 - Approximately 17% middle school student vaccinated

