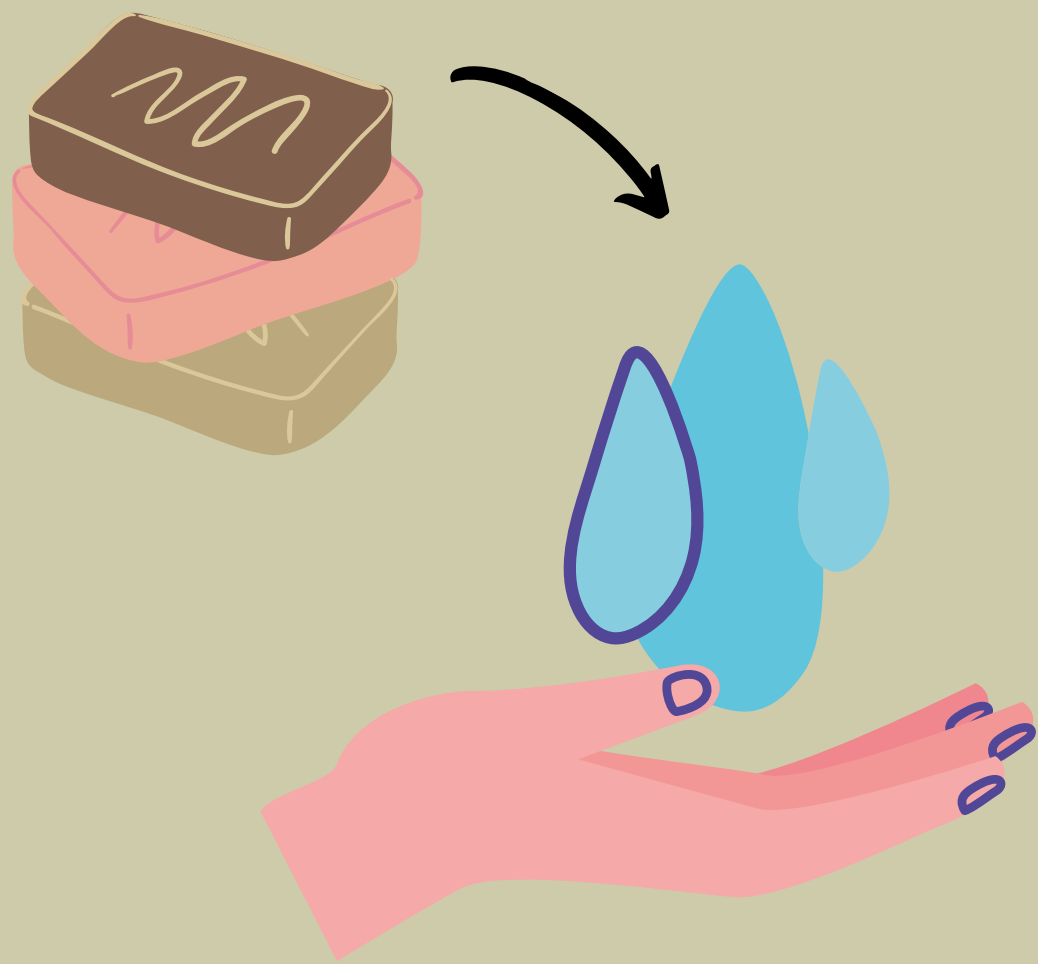


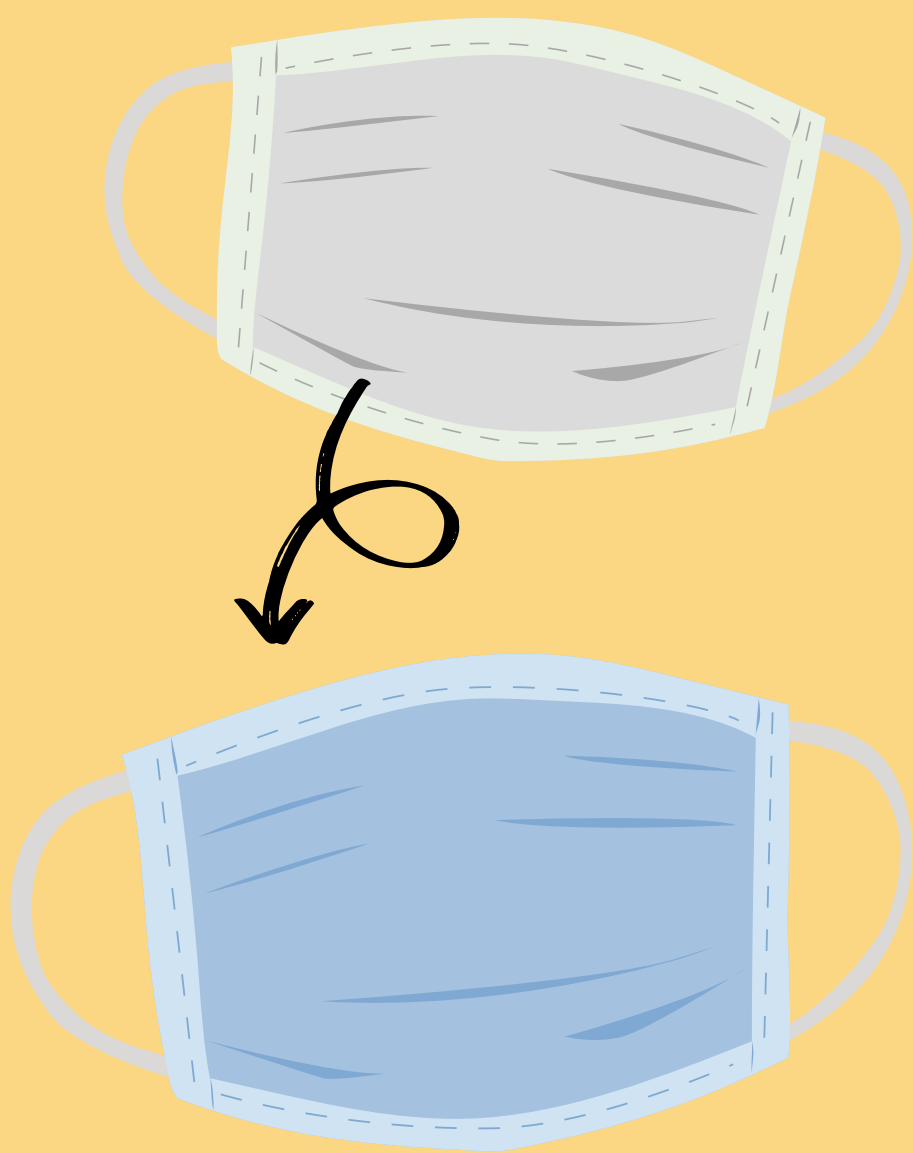
# A GUIDE TO MASK USE



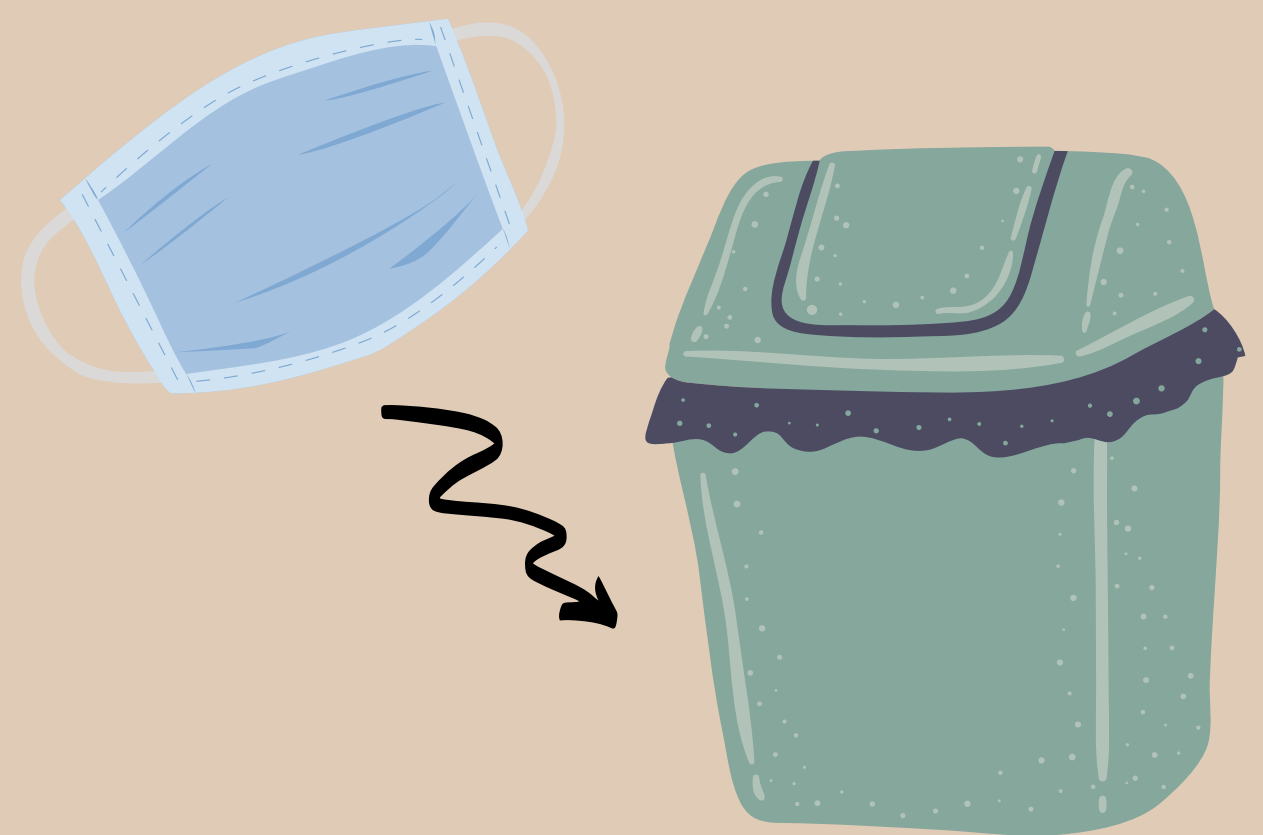
Before putting on a mask, clean hands with alcohol-based hand rub or soap and water.



Cover mouth and nose with mask and make sure there are no gaps between your face and the mask.



Replace the mask with a new one as soon as it is damp and do not re-use single-use masks.



To remove the mask: remove it from behind (do not touch the front of mask); discard disposable masks immediately in a trash bin; cloth masks should be washed before reuse; clean hands with alcohol-based hand rub or soap and water.